



SANCTUARY
RETREATS

Sanctuary M.S. Yangzi Explorer, China





The Beautiful Yangzi River

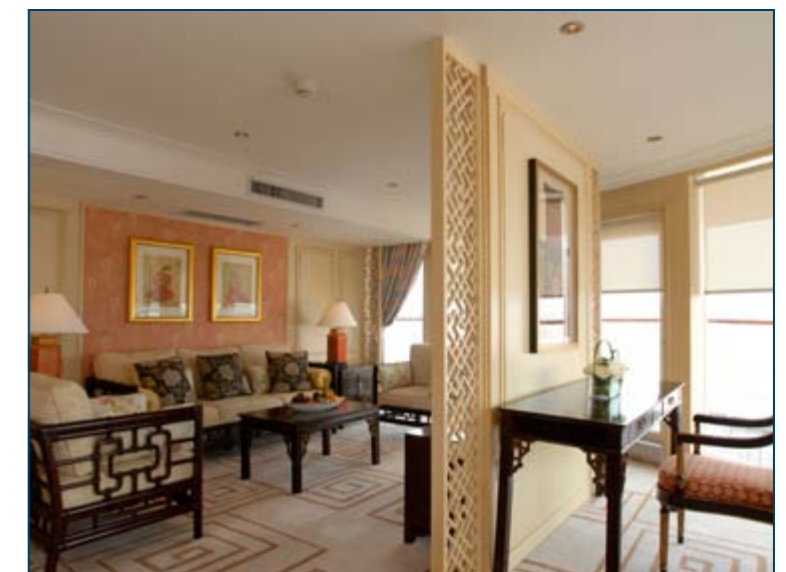
At almost 4,000 miles long, the Yangzi River is the longest river in Asia, the third longest river in the world and the birthplace of Chinese civilisation. The Yangzi is the historical divider between northern and southern China, providing a natural barrier against invaders and waterway for transport and commerce. In modern times, China's coming of age as a world power is heralded by a colossal feat of engineering, the Three Gorges Dam.





A Cruise like No Other

The Sanctuary Yangzi Explorer has introduced a new standard of cruising to China. With the largest cabins and the highest crew to passenger ratio on the river, this is a cruise unlike any other. On board facilities include a la carte dining, a luxury spa, an observation deck, 24-hour room service, a two-floor theatre, business centre, fitness centre, suite lounge, photo corner, gift shops and private function rooms.



Largest Cabins & Suites on Yangzi

Occupying four decks, accommodation is in spacious and stylish cabins and suites. In addition to 38 deluxe cabins, there are 20 suites and four specialty suites. All boast floor-to-ceiling picture windows with access to a private balcony, allowing for unobstructed views of the passing scenery.



Comprehensive Itineraries

The shore excursions and onboard activities are designed to highlight the remarkable wealth of China's vast cultural tradition. Visit Daoist temples and shrines at Fengdu, explore the towering peaks and remote villages of the Three Gorges - Qutang, Wu and Xiling - and see the controversial Three Gorges Dam Project. Onboard activities include Tai Chi, Chinese cooking, calligraphy and silk embroidery classes.

Sanctuary M.S. Yangzi Explorer, Yangzi River, China

Location:

- The Sanctuary M.S. Yangzi Explorer is an intimate and luxurious cruise ship on the Yangzi River in China
- Cruises begin or end in Chongqing or Yichang
- Domestic flights from Beijing/Xian/Shanghai to Chongqing or Yichang take approximately three hours

Guest cabins:

- All cabins boast floor-to-ceiling windows providing access to private balconies. In addition to a choice of king or twin beds, connecting cabins are also available. All cabins are equipped with private bathroom, hairdryer, safety deposit box, mini bar and LCD satellite television
- There is a choice of 38 Deluxe Cabins, 20 Suite Cabins, two Mandarin & Jade Suites and two Celestial & Imperial Suites

Responsible Travel:

- The Sanctuary Yangzi Explorer has been developed to minimise its impact on the fragile Yangzi environment
- The ship is fitted with a technologically advanced sewage disposal system

Dining:

- Breakfast, lunch, snacks and dinner are included in your stay (except the embarkation dinner and disembarkation lunch). Breakfast and lunch are served in a buffet style, dinner is served a la carte without surcharge
- One private afternoon tea and one gourmet dinner served in the specialty suites

Itineraries:

- The three night downstream cruise departs Chongqing on Thursday and arrives in Yichang on Sunday; the upstream four night cruise leaves Yichang on Sunday and arrives in Chongqing the following Thursday
- The cruise itineraries are designed for a relaxed pace and tailored to water levels at different times of the year
- Variety of on board activities available including Tai Chi, Chinese cooking, calligraphy and silk embroidery classes



T +852 3179 5900 E china@sanctuaryretreats.com www.sanctuaryretreats.com

