



SANCTUARY  
RETREATS

# SANCTUARY KICHAKANI SERENGETI CAMP

## LUXURY, NATURALLY

---

Adventure, enchantment and 'Luxury, naturally' - all delivered with a quiet, understated charm and understanding of place – is the guiding philosophy of Sanctuary Retreats and one of our traditional safari tented camps, Sanctuary Kichakani Serengeti Camp.

Sanctuary Kichakani Serengeti Camp will be located in the Northern Serengeti from 1 June 2023 - 14 November 2023, Southern Serengeti from 1 December 2023 - 31 March 2024 and Northern Serengeti from 1 June 2024 - 14 November 2024. With just ten luxury safari tents you will have the privilege of feeling closer than ever to the action and live among the migration – as it happens. Join six million hooves crossing the open plains, with more than 200,000 zebras, 300,000 Thomson's gazelles and over a million wildebeests as they trek for fresh grazing.

## USPS

---

- Unbeatable viewing of the great migration
- A classic tented camp with a more luxurious look and feel
- Boutique camp with just 10 luxury tents
- Sophisticated communal spaces

## SPECIAL REQUESTS

---

Sanctuary Kichakani Serengeti Camp prides itself on its personalised services. Please let us know if you have any special requests, interests, dietary requirements, allergies or medical conditions.

## ACCOMMODATION AND FACILITIES

---

Sanctuary Kichakani Serengeti Camp takes the traditional tented camping experience to new heights; and offers luxury traditional tented accommodation not seen elsewhere in the Serengeti. The small and intimate camp comprises of just 10 luxury safari tents, all with ensuite bathrooms with indoor bucket showers, king-size beds, and everything that makes a Sanctuary tented camp an authentic safari experience. All the tents also feature hairdryers, mosquito nets, in-room safes and a small sitting area in front of each of the tents where early morning coffee and biscuits can be enjoyed before starting the day of incredible game viewing. The large and comfortable communal tents provide a dining area where scrumptious meals are served, a lounge area perfect for afternoon relaxation, and lounge bar where pre-dinner drinks are served. All of the main areas include breath taking views of the spectacular surrounding scenery and large trees surrounding this intimate camp. Comfortable sofa spots are also set up around the camp to afford unique viewpoints. Electricity supply is a combination of silent packed generator and inverter battery system.

The camp is available on a shared basis however can be booked for exclusive use, in which case eight of the ten rooms need to be booked and paid for.





## GAME VIEWING AND ACTIVITIES

---

The famous wildebeest migration will pass through the camp's Northern Serengeti location. The Serengeti houses a huge variety of animals including leopards, lions, buffaloes, elephants, cheetah, Thomson's and Grant's gazelle, topi, eland, waterbuck, hyena, baboon, impala, African wild dog, and giraffe. The park also hosts about 500 bird species, such as ostrich, secretary bird, crowned crane, marabou stork, martial eagle, lovebirds, and many species of vultures. Key wildlife: lion, rhino, buffalo, elephant, leopard, wildebeest, and zebra.

**The following activities are included in your stay:**

**Game drives:** Sanctuary Kichakani Serengeti Camp offers guests the opportunity to experience the great migration! Our experienced guides know every inch of the park where morning and afternoon game drives are focused on the migration and the other species and predators that come along with this incredible spectacle. Should you wish, we can arrange for a full day out in the bush on safari. The bird life is particularly good on the forest edge- where woodpeckers and brightly-coloured kingfishers can often be seen.

### A TYPICAL DAY ON SAFARI

---

- **05:30** Wakeup call
- **06:00** Breakfast
- **06:30** Depart for morning game drive
- **12:00** Lunch at the camp or bush picnic lunch while on a full day safari
- **16:00** Depart for afternoon game drive
- **19:30** Dinner

### HONEYMOONS AND SPECIAL OCCASIONS

---

Guests celebrating their honeymoon will receive special surprises during their stay. All attempts are made to keep honeymooners separate from other guests.

**Our honeymoon services include:**

- Private bush picnic with blanket and pillows (subject to the site availability)
- Romantic private dinners
- Romantic turndowns



---

## DINING

---

Breakfast, lunch, snacks during activities and dinners are all included in your stay. Breakfast is served before the morning game activity. If a packed breakfast is requested, coffee, tea and a selection of morning snacks will be served out in the bush during your morning game viewing activity. Lunch will be enjoyed back at the camp or a bush picnic can be provided when on a full day safari. Coffee tea etc. during game drive will only be done if guests are taking a breakfast picnic. Romantic private dinners can be arranged upon request. With prior notice, our camps are able to arrange halaal meals, however, please note our kitchens aren't strictly halaal and our chefs are not trained in halaal food preparation. Unfortunately, we are unable to arrange kosher meals.

---

## MONEY AND CREDIT CARDS

---

All extras can be paid for with US dollars, Pounds and Euros however change will be given in the local currency. There are no credit card facilities in camp.

---

## TIPPING GUIDELINE

---

Tipping is not obligatory but generally accepted rates are \$15 per guest per day for the guide and \$15 per guest per day for the rest of the staff.

---

## HEALTH

---

Please should discuss health precautions for your travel itinerary with a qualified health professional at least six weeks before you depart. We advise all travellers to take precautions against malaria and we recommend speaking to your GP or personal physician four to six weeks before departure. Travellers from or through countries which have been declared yellow fever infected areas must provide an international health certificate of vaccination for yellow fever upon arrival into Tanzania.

---

## FAMILIES WITH CHILDREN

---

We welcome children 6 years and older Sanctuary Kichakani Serengeti Camp.

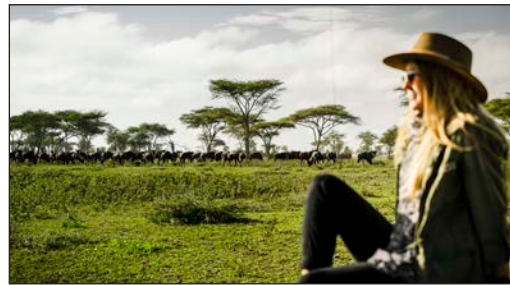
Children aged 15 years and younger are required to share with their parents. Triples are available on request.



## CLIMATE

---

Tanzania has a tropical climate which is mainly characterised by warm days and cool evenings. December to March is usually the warmest months of the year, while June to August are the coolest. April and May often see intermittent rains, and from September to November the days are warm with short scattered rains falling in November.



## CLOTHING

---

Clothing should be cool and comfortable. Greens, browns and khaki coloured clothing are advisable for safaris especially when doing a walking safari.

We suggest long sleeves and long trousers and for morning and evenings due to mosquitoes and a fleece jacket as it could be cold early mornings. Sturdy and comfortable shoes are essential. A complimentary overnight laundry service is offered in the camp.

Sunscreen, sunglasses and hats are essential. Binoculars and good cameras are an absolute must. The camp provides a torch as well as complimentary mosquito repellent and toiletries.



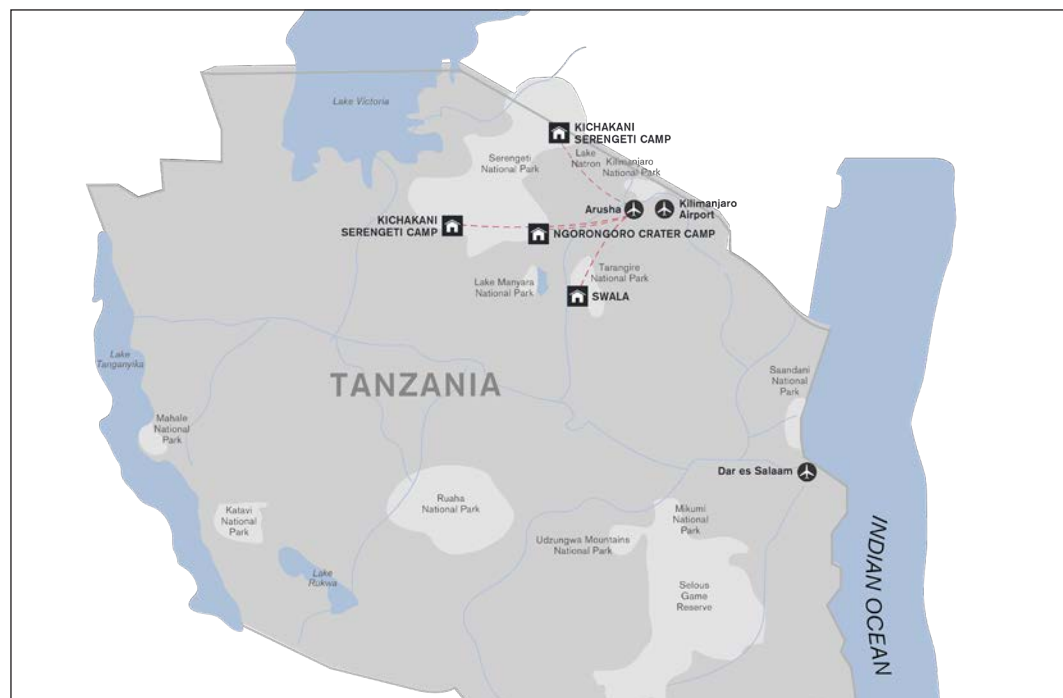
## LOCATION AND GETTING THERE

Sanctuary Kichakani Serengeti Camp will be located in the following areas, in line with the migration movements:

Month	Region	Airstrip	Transfer times	
			Flight time from Arusha	Road transfer from airstrip to camp
1 June 2023 - 14 November 2023	Northern Serengeti	Lamai	1.5 hour	1h 30
1 December 2023 - 31 March 2024	Southern Serengeti	Serengeti South	1.5 hour	10-15 minutes
1 June 2024 - 14 November 2024	Northern Serengeti	Lamai	1.5 hour	1h 30

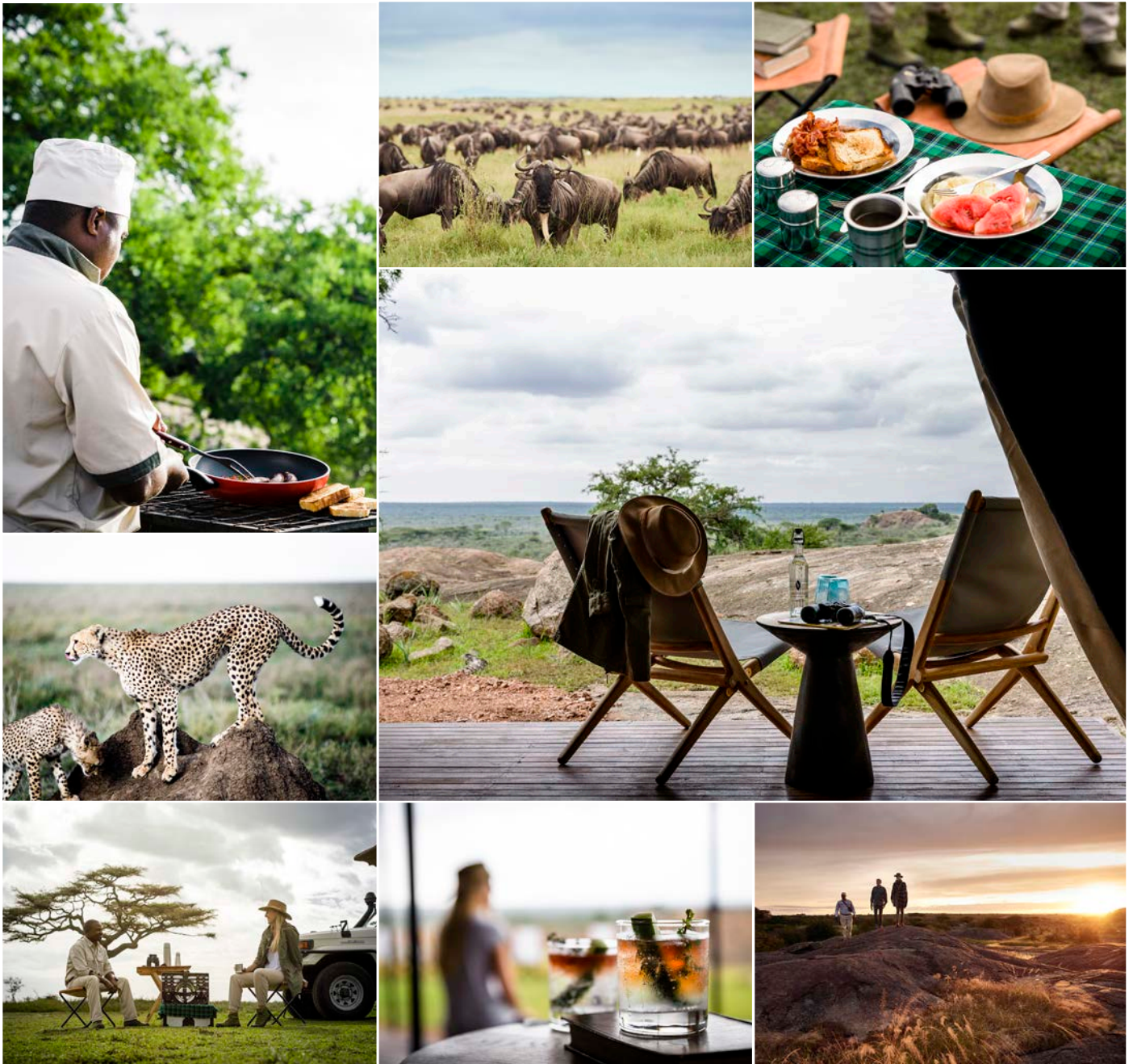
**PLEASE NOTE:**

- The luggage restriction for light aircrafts is 15kg / 33lbs per person in a soft-sided bag.





## SANCTUARY KICHAKANI SERENGETI CAMP



## RESERVATIONS AND ENQUIRIES

For more information and for your next booking, please contact us:

+ (255) 27 250 9817  
reservations.tanzania@sanctuaryretreats.com